

GRAD.  
II

A

Nge-lis su-is mandá-vit de te, \* ut custódi-ant te

in ómni-bus vi-is tu-is. 2. In máni-bus portábunt te, \* ne

unquam offénda-s ad lápi-dem pedem tu-um

TRACT.  
II

Q

UI hábi-tat in adjutó-ri-o Altí-si-mi, \* in pro-lecti-

óne De-i cae-li commo-rábi-tur, 2. Di-cet Dómi-no: Suscíp-

tor me-us es, \* et re-fúgi-um me-um, De-us me-us: spe-rá-

bo in e-um. 3. Quóni-am i-pse li-be-rá-vit me de láque-o

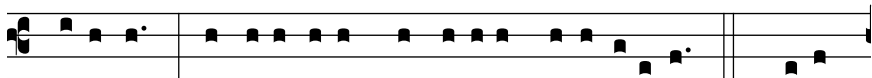
venánti-um, \* et a verbo áspe-ro. 4. Scápu-lis su-is obum-

brábit ti-bi, \* et sub pennis e-jus spe-rábis. 5. Scuto circúm-

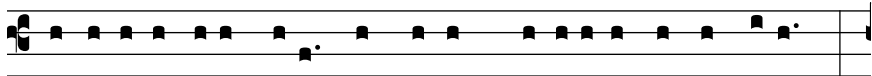
dabit te vé-ri-tas e-jus: \* non ti-mébis a ti-mó-re noctúrno.



6. A sa-gítta vo-lánte per di-em, † a negó-ti-o per-ambu-lánte in



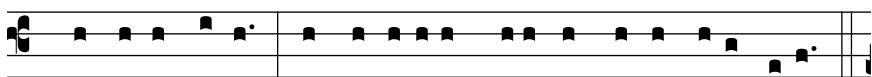
ténebris, \* a ru-í-na et daemóni-o me-ri-di-áno. 7. Cadent



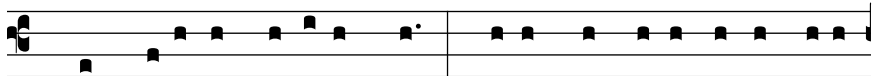
a lá-te-re tu-o mille, † et de-cem míl-li-a a dextris tu-is: \*



ti-bi autem non appropinquábit. 8. Quóni-am Ange-lis su-is



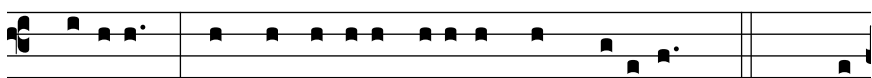
mandá-vit de te, \* ut custódi-ant te in ómni-bus vi-is tu-is.



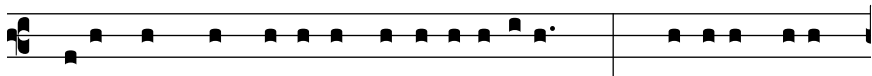
9. In máni-bus portábunt te, \* ne unquam offéndas ad lápi-



dem pedem tu-um. 10. Super áspi-dem et ba-si-lí-scum am-



bú-labis, \* et conculcábis le-ónem et dracónem. 11. Quó-



ni-am in me spe-rá-vit, li-be-rábo e-um: \* pró-tegam e-um,



quóni-am cognó-vit nomen me-um. 12. Invocábit me, et e-

